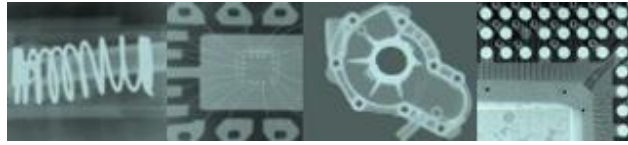
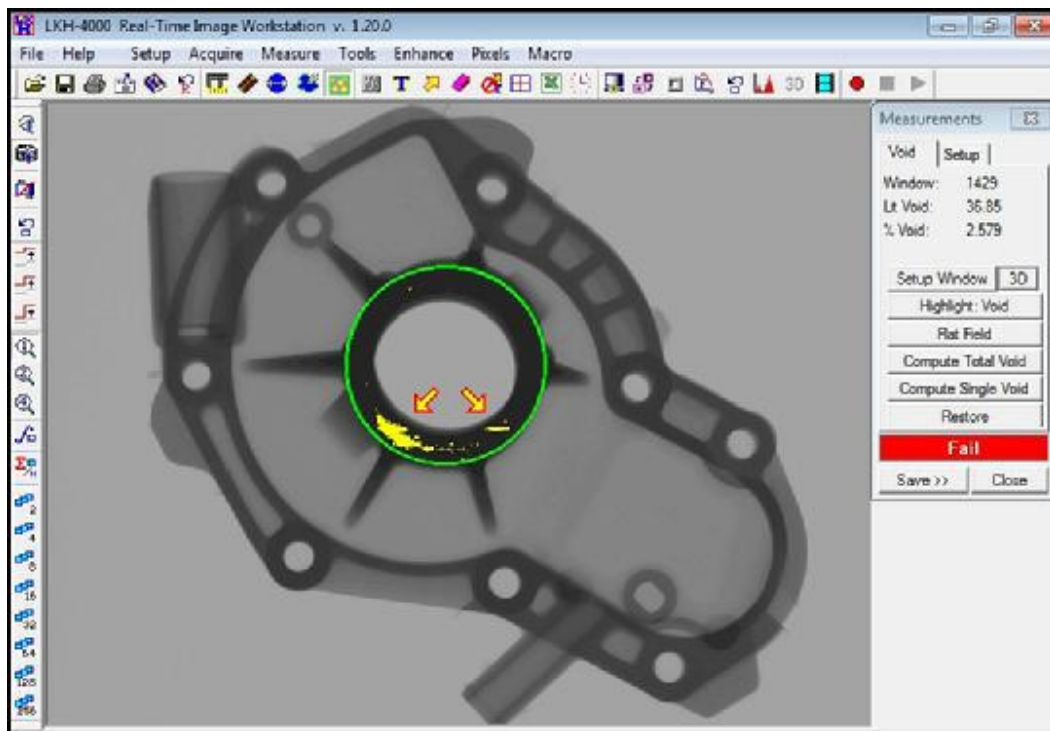


LKH-4000



A full-feature software package for creating PC-Windows workstations for NDT applications.

- Inspect castings, machined parts, welds, gems and other materials.
- Reveal and document defects, such as voids, cracks, and missing parts.
- Measure internal dimensions -- linear distances, diameters, and areas.



Detect and quantify voids (porosities)

System Requirements

Windows 10, 7, XP
RS-170 video input
USB frame grabber

Live Image Processing

Frame Averaging
Image Sharpening
Zoom and Scroll
Contour Relief
Pseudo color
Automatic Contrast

Calibrated Measurements

Linear Distance
Circle Diameter
Percent Void
Traced Area
Pass/Fail reporting
Save Data in Excel

Analysis Features

Pixel Histogram
Pixel Line Profiles
Read Single Pixels
Split-Screen Display
Quad-View Display
3-D Rendering

Image Archiving

Save Image to Disk
Video Recording
Text Labeling