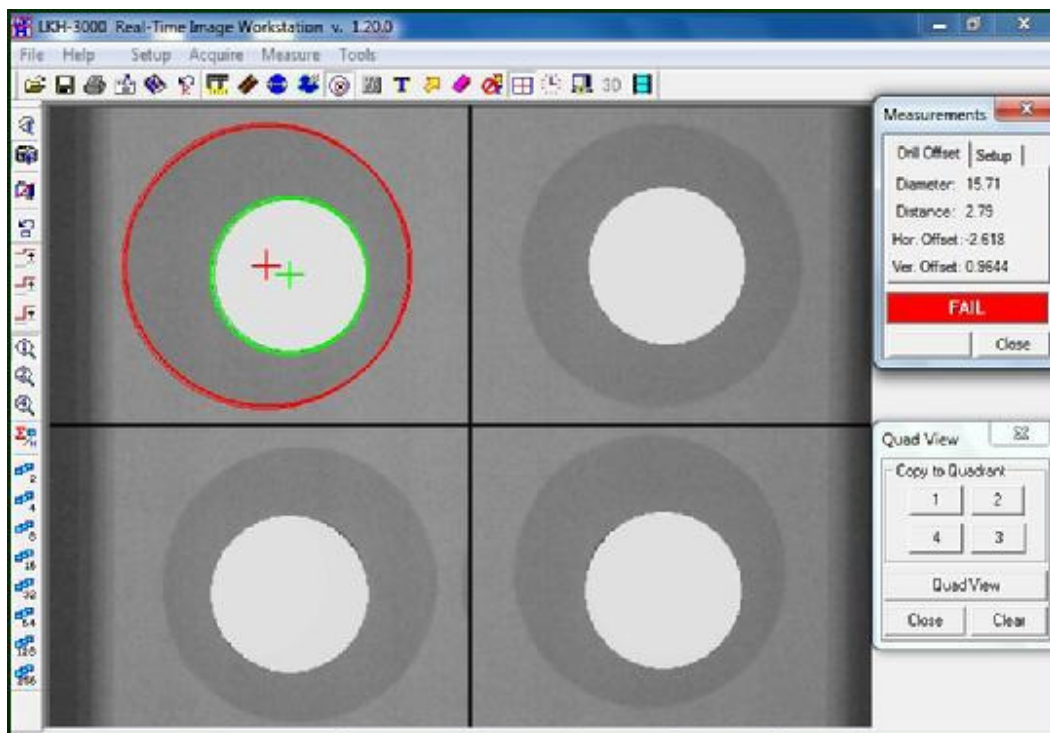


LKH-3000



A software package for creating PC-Windows workstations for quality control in printed circuit board fabrication.

- Inspect bare PC boards for defects early in the fabrication process.
- Measure X-Y drill offset for correcting errors in hole-pad alignment.
- Reveal and quantify inner layer registration errors in multi-layer PCBs.



Measure hole-pad alignment errors.

System Requirements

Windows 10, 7, XP
RS-170 video input
USB frame grabber

Live Image Processing

Frame Averaging
Image Sharpening
Pseudo color
Automatic Contrast

Calibrated Measurements

Drill hole X-Y Offset
Linear Distance
Circle Diameter
Traced Area
Pass/Fail reporting

Analysis Features

Split-Screen Display
Quad-View Display
3-D Rendering

Image Archiving

Save Image to Disk
Video Recording
Text Labeling